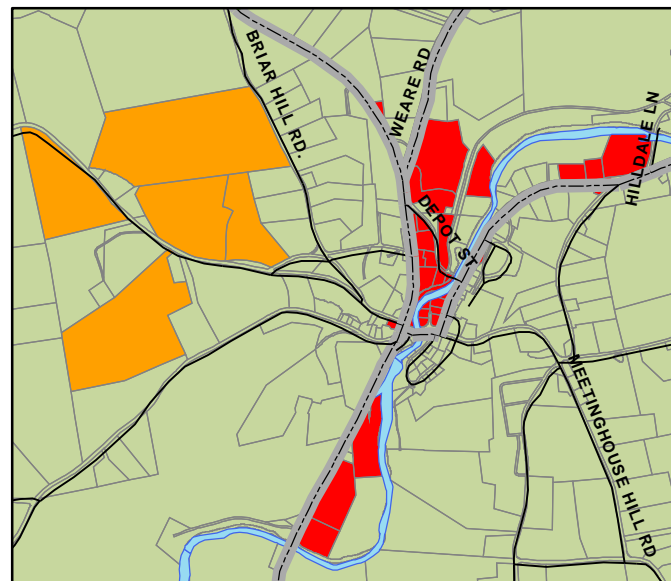
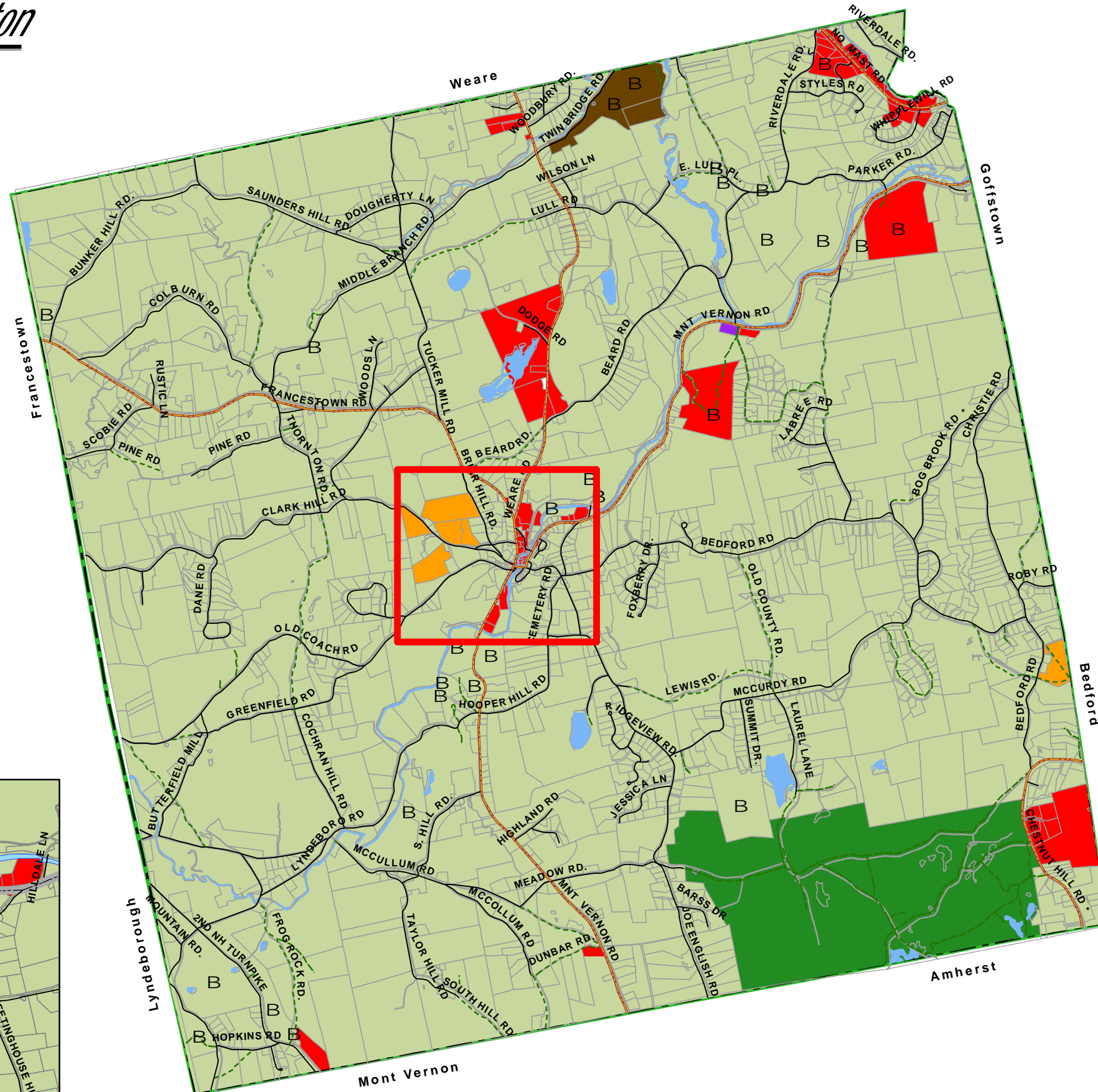


Zoning Map



Legend

- Town Boundary
- Interstate
- State Roads
- Local Roads
- Class VI Roads
- Sand and Gravel Pits

Zoning Districts

- Residential - Agriculture
25,145 91%
- Residential One
131 0.5%
- Commercial
604 2%
- Industrial
6 .02%
- Manufactured Housing Park
130 .05%
- Forestry & Conservation
1,637 6%

See accompanying maps for: Wetlands Conservation District, Groundwater Resources, Conservation District.

This map was produced by the Southern New Hampshire Planning Commission for the Town of New Boston, New Hampshire January 8, 2004, Revised July 24, 2006

Data Sources:
GRANT Digital Data (1:24,000), NH Department of Transportation, Town of New Boston Composite Tax Map
Zoning Coverage digitized by SNHPC, NH DES

The Town of New Boston and the SNHPC make no representations or guarantees to the accuracy of the features and designations of this map. All zoning boundaries are approximate. This map is designed for planning purposes only and is not to be used for legal boundary determinations or for regulatory purposes.

This map does not, and is not intended to indicate the official status (acceptance by the Town) of streets and roads.

